

A Tribute to Lynn McBride...

Lynn McBride has been my friend for over thirty years. I have known him to be a soldier of the cross who dedicated his life to healing our land one person at a time. Whether it was through the Chronicle, CMA, or CKPM, Lynn prayed, he sought God's face, and he compassionately told the salvation story to anyone who would listen.

Lynn had a mind that could analyze a problem and then centralize the Gospel as the solution. Throughout his years as director of CKPM, Lynn was energized by the hope of Jesus Christ as he faithfully emphasized the fullness of Christ's love to those left empty by a life of sin.

The day before his death, I stood by Lynn's bedside and his love for his family was evident, his mind was still planning for the future of CKPM, and his concern for the lost was heard in his last request: "Stan, I want you to give an invitation when you finish speaking."

In his last words John Knox, one of the founders of the Scottish reformation, said, "Live in Christ, die in Christ, and the flesh need not fear death."

Lynn McBride lived in Christ, died in Christ, and he did not fear death. "Well done, good and faithful servant. You have been faithful over a little; I will set you over much. Enter into the joy of your Master (Matthew 25:23).

May we smile when we think of Lynn; may we continue our prayers for CKPM; and may we pray for God's blessing to be upon Karen and her family.

In Christ,

Stan Seymour



A Note from the Board

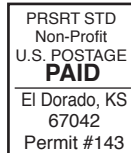
As President of the Board for Central Kansas Prison Ministry, I welcome calls, concerns, or questions regarding the future of the ministry. CKPM will be continuing to take God's word into the prison and anywhere else He leads. We are seeking God's leading in the decisions we make.



David Schmidt • c-316.665.2665

MEMOS Newsletter

Central Kansas Prison Ministry
P.O. Box 1279
El Dorado, KS 67042-1279



RETURN SERVICE REQUESTED

Hutchinson Correctional Facility All training will be held in the Old School House on the Correctional Facility Central Unit Campus

BASIC BEGINNING TRAINING

Monday	October 17	12:30 pm to 4:00 pm
Monday	November 21	12:30 pm to 4:00 pm
Monday	December 19	12:30 pm to 4:00 pm

ANNUAL FOR REGULAR VOLUNTEERS

Monday	October 17	2:00 pm to 4:00 pm
Monday	November 21	2:00 pm to 4:00 pm
Monday	December 19	2:00 pm to 4:00 pm

All training on the 3rd Monday of the month. Please contact the Pastoral Care Department with any questions.

**Sue Stoecklein for more details.
620-625-7380 - Sue.Stoecklein1@ks.gov
or Thomas Broomfield
620-625-7380**

Central Kansas
Prison Ministry
SEPTEMBER 2022

MEMOS

Last Training Date
for EDCF Nov. 5th
See Page 2

Lynn's Homegoing

- Article by David Schmidt, CKPM board President



Lynn McBride - CKPM Director

Hello friends and partners of CKPM. Our beloved Executive Director for over 30 years was called to his eternal home in heaven on August 11. The impact of Lynn's faithfulness to the Lord and CKPM will become better known as you continue reading this month's edition. As the current president of the Board of Trustees I say "Thank You" for your faithfulness and concern for this ministry. We have seen and will learn more of how the Lord used Lynn to lead CKPM to where it is today. The Board and the McBride family want you to know we are seeking to diligently carry on in Lynn's absence. We believe God has used CKPM to help set prisoners free physically, but more importantly spiritually. We plan to continue and expand the reach of CKPM. I am grateful to share that in association with Chaplain Harris, Nehr, and the SLC at El Dorado Correctional, (EDCF) and through the generosity of God's people the services and support of the SLC will now reach the majority of residents at EDCF and beyond thanks to new technology and upgrades. We will continue to broadcast and publish video Bible studies, as we continue to come alongside those in bonds through the Match 2 mentoring program (M2) and Bible studies. We will remember them which suffer adversity. (Heb. 13:3) Please be in prayer for God's wisdom for the leadership and administration of CKPM. Please pray for the comfort and strength for Karen and family. They too want to honor Lynn's legacy and see what great and marvelous things God will continue to do through CKPM. We are so grateful for each of you, and we will by God's grace stand fast and hold the traditions taught. (2 Thess. 2:13-17) I want to close with an excerpt of a song that Lynn wrote entitled "Heal This Land". We were privileged to hear and see a video of Lynn and Calvary Echoes quartet sing at his funeral. May these words be our prayer and purpose. "We come before you Lord with humble broken hearts. We've lost our bearings and we need a brand-new start... Give us power, give us strength from Your almighty hand... Hear our cry, heal this land." God's blessings to you!

A memorial has been established in Lynn's memory to Central Kansas Prison Ministry.

**If you wish to make a donation, send to
Central Kansas Prison Ministry • PO Box 1279 • El Dorado, KS 67042**

Volunteer Training Dates for 2022

El Dorado Correctional Facility

ALL Volunteers MUST go through training before being able to go back in.

Currently, all Bible studies and mentoring continue to be NOT operating. We will let you know when they begin again.

Saturday, November 5th

7:30 am – 12:30 pm

Meet in Lobby for ID then proceed to Spiritual Life Center

Arrive by 7:30PM

Administrative Assistant — Amber Hoffman

316-321-7284 — extension 22362

Email — amberhoffman@ks.gov

Chaplain - Herbie Harris 316-321-7284

extension 22308

Email — Herbie.Harris@ks.gov

or Central Kansas Prison Ministry

316-733-1537

Email — director@ckpm.org

Mentoring4Success Training Information:

For information please contact Tanya Husselman 316-613-7237 or Tanya.Husselman@ks.gov

Possible training in the next few months. Watch newsletter



A Remembrance from former Warden Ray Roberts

In 2003, I had the privilege of working closely with the Central Kansas Prison Ministry (CKPM)

during my tenure as Warden of the El Dorado Correctional Facility (EDCF). The highlight of my association was being involved in a private/public collaboration to build a Spiritual Life Center (SLC) on prison grounds. The CKPM Board had a vision in years past of raising funds through private donations and various fund-raising events and building this facility. The SLC would serve as a symbol of hope for the incarcerated population and provide many other benefits. The driving focus of the project was to promote spiritual growth, improve prison adjustment, encourage accountability and personal responsibility and facilitate faith community volunteer activities.

A committee was established and chaired by Larry Crawford, who did an outstanding job spearheading the committee. The members included Donavon Claassen, Lynn McBride, the Director of CKPM, a variety of facility staff to include myself and a representative from the KDOC Central Office. The committee was instrumental in keeping the project moving. We discussed fund-raising ideas, reviewed blueprints and funds raised and materials obtained for the project. While everyone actively participated on the committee, Lynn McBride, a man of many talents, really did a lot of good work fund-raising. Lynn had many connections with churches and faith groups in the Wichita area and this proved to be very beneficial. The proof is in the pudding regarding the success of the SLC. Volunteers, who are the backbone in many respects of the correctional facility, provide an essential service to the incarcerated population and help maintain a good security posture in the facility. They faithfully meet with inmates and discuss important issues, provide Bible studies, give hope and encouragement, and teach life skills through their words and actions. As a result of the SLC success at EDCF, the Hutchinson and Winfield Correctional Facilities are working on SLC projects at their locations.

In closing, I have developed a healthy respect for the CKPM ministry and volunteers. They are positively impacting inmates and their families lives. I am convinced that through their efforts, inmate lives have been changed and public safety has been enhanced. I hope the work continues for many years.



End Times

Glenn Lygrisse

Bible teacher at his church and online devotional thoughts. Glenn was also part of the Match2 mentoring and former president of Central Kansas Prison Ministry.

“I will make known My holy name among My people Israel. I will no longer let My holy name be profaned, and the nations will know that I the LORD am the Holy One in Israel. It is coming!” Ezekiel 39:7-8A NIV(emphasis mine)

Read, Ezekiel Chapters 40-41

Comment:

These two chapters are filled with prophecies concerning the “end times”. Note how often in these chapters it makes reference to “that day”, a direct link to what we now call “end times”. I am tempted to write a couple of pages on some of the meanings we find in these chapters, but for your sake I slimmed down to this verse. It seems to be a culminating verse in that once the “dust settles” then there will be peace and a recognition of who God really is. A day of rejoicing for believers, for those who oppose God—not so much!

Prayer Thought:

Thank God for your salvation, and rejoice that you will not be among those who face their end full of anger and regret.

Blessings,

Glenn

QUIZ: Which adds up more, giving \$100 a month or \$1,000 a year?

Answer: Both ways are so appreciated, but \$100 a month is a larger donation. It totals \$1,200 or 20% more.

EDCF Update Chaplain Herbie Harris

A lot of you volunteers, just like our residents are eager for religious call-outs to begin again. So are the Chaplains! We miss all of you coming in and overseeing Bible Studies, Worship Services, M2 Meetings, Celebrate Recovery and other studies that benefit the men in such positive ways. Chaplain Neher and I have presented options to begin Primary Call-outs which he and I oversee. This means that we would have to escort participants to and from their cell houses and oversee their call-outs due to Security Staff shortages. When call-outs do begin, volunteers will be allowed to participate with the residents in them. We have also presented a proposal that M2 be allowed to start up again. Because the M2 program accepts men whether they are Christian or not, we presented it as a focus on anyone in General Population. I also want to assure those CKPM volunteers, that, with Lynn’s homegoing a few weeks ago that Tuesday nights, M2, etc., does not change anything as far as we are concerned. With the technology upgrades beginning in the SLC, Lynn’s legacy will live on as we continue to impact lives for Jesus Christ.

Central Kansas Prison Ministry is ON LINE www.ckpm.org

Karen McBride, contact person
Email: director@ckpm.org

P.O. Box 1279 • El Dorado, KS 67042

Wichita phone (316) **733-1537**

TRUSTEES POSITIONS

David Schmidt - President	Robert Buckingham - Trustee
Chuck Harder - Vice President	Donovan Claassen - Trustee
Carol Patterson - Treasurer	Ron Ducharme - Trustee
Karen Deaver - Secretary	

ADVISORY POSITIONS

Tim Ayres	Frank Gill	Robert Schmidt
Jennifer Bugner	Shem Hatfield	Bob Simmons
David Chatlain	Roderick Houston	Mark Sommerville
Dr. Garry Cowan	David King	Don Thomas
Ron DeCharme	Dr. Scott Landes	Clarence Walker
Bishop Mark Gilkey	Jon Putman	